

T8 LED TUBES COMPARISON

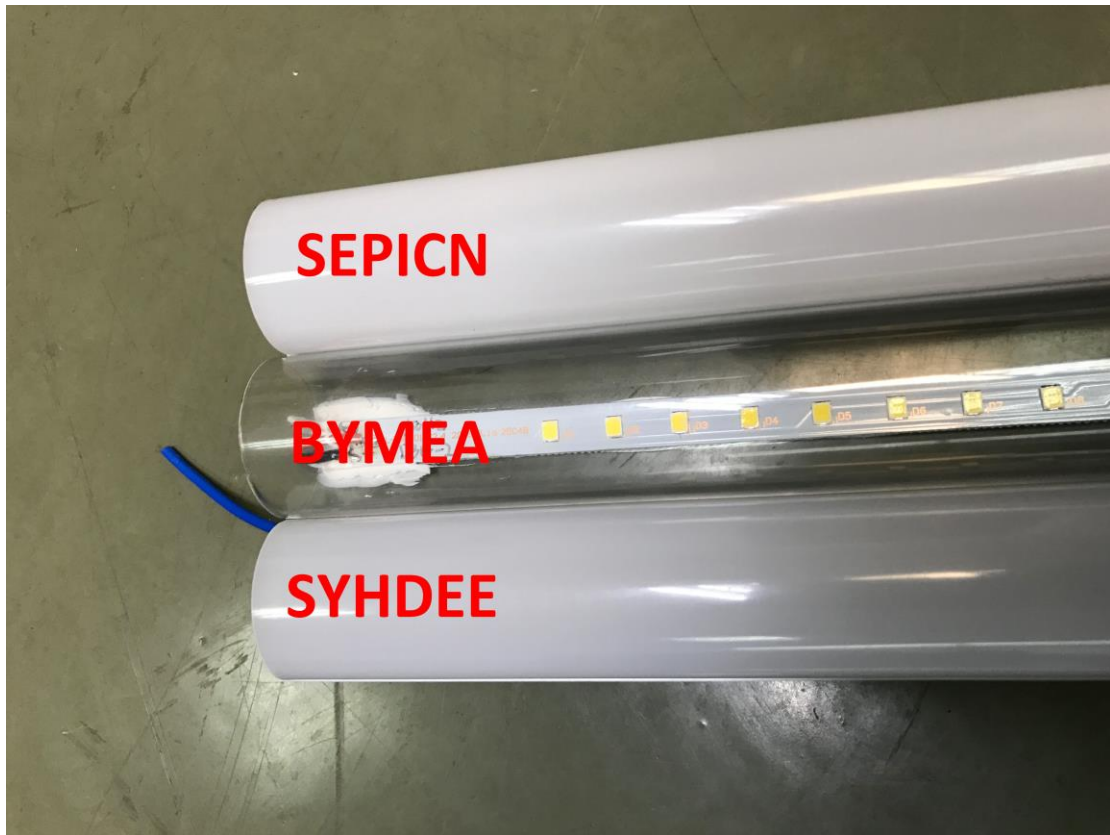
We made a comparison about T8 tubes between SYHDEE and BYMEA and SEPICN. Below is the detailed information.

	SEPICN	SYHDEE	BYMEA
Heat sink	99% pure aluminum	Recycle Aluminum, Impurities of alloy	Glass
Aluminum thickness*	0.9mm	0.6mm	\
Lens/Cover:	UL94V-0 fireproof grade	Not clearly	\
Driver	Double insulated	Single insulated	Not
PCB circuit board	UL standard. High voltage test by 3000V 6s	not clearly	Very thin, can't pass the test
Wiring	UL standard double-insulated wiring	Not UL standard	DC wiring or AC very thin high gage wire
LED chip	LM80 approved, from top 3 factory in China, 30~32LM per LEDs	22~24LM Per LEDs	\
Luminous efficiency	130LM~145LM/W	110LM/W	\

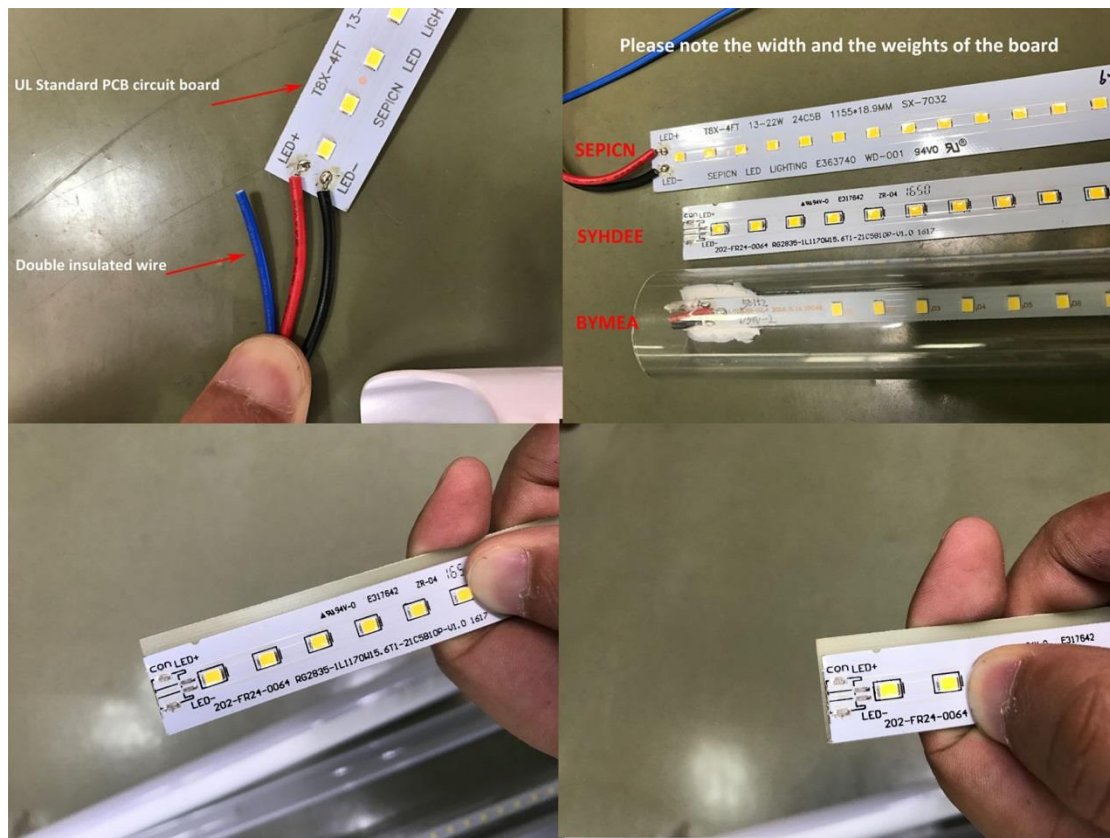
*Aluminum thickness UL standard: 0.81mm thick min as shown in our test report.

2	3	Metal Enclosure	Various	Various	Aluminum, Form in D-shape, 0.81mm thick min. For model HC-T8-2FT-10W-ID-C-A: Overall: Φ 26 mm x 588mm; For model HC-T8-4FT-13W-ID-C-A, HC-T8-4FT-18W-ID-C-A, HC-T8-4FT-22W-ID-C-A: Overall: Φ 26mm x 1168mm; See illustration No. 3 for detailed dimensions.
---	---	-----------------	---------	---------	---

Appearance



PCB and Wire



Driver

