

# Tri-proof LED light



## Tri-proof LED light

2FT/4FT

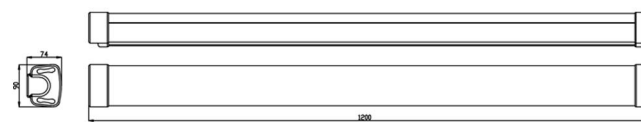
### Specification>>

Model	HCLL2FT030W	HCLL4FT030W	HCLL4FT060W	HCLL4FT100W
Size:	600mm	1200mm	1200mm	1200mm
Power:	30W	30W	60W	100W
Voltage:	AC 110-277V	AC 110-277V	AC 110-277V	AC 110-277V
Color Temperature:	3000K-6500K	3000K-6500K	3000K-6500K	3000K-6500K
Dimmable:	Yes	Yes	Yes	Yes
Lumens:	2700lms	2700lms	5400lms	9000lms
CRI:	>80	>80	>80	>80
Rated Life:	50,000 hours	50,000 hours	50,000 hours	50,000 hours
Motion Sensor:	Available	Available	Available	Available

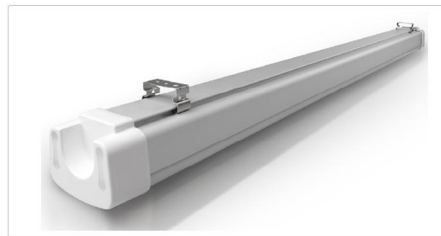
### Dimension>>



Model:HCLL2FT030W  
 Size:600\*90\*74mm



Model:HCLL4FT030W/HCLL4FT060W/HCLL4FT100W  
 Size:1200\*90\*74mm



### Features>>

- Direct replacement of tube fixture or bay lights.
- Cable-suspended or surface mounted.
- Dimmable or non-dimmable available.
- High luminous efficacy:110LPW,CRI>80,R9>0 THD<15%,PF>0.95,Isolated driver
- Excellent heat sink material&IP65,could be used in dry or damp location



Snap Joint

### Certification >> ETL cETL DLC is pending



### Package>>

Part No.	Size(mm)	Unit weight (kgs)	PCS/CTN	G.W.(kgs)	Size(mm)
HCLL2FT030W	600*90*74	0.9	6	7	680*260*300
HCLL4FT030W	1200*90*74	1.8	6	20	1340*500*280
HCLL4FT060W	1200*90*74	1.8	6	20	1340*500*280
HCLL4FT100W	1200*90*74	1.8	6	20	1340*500*280

